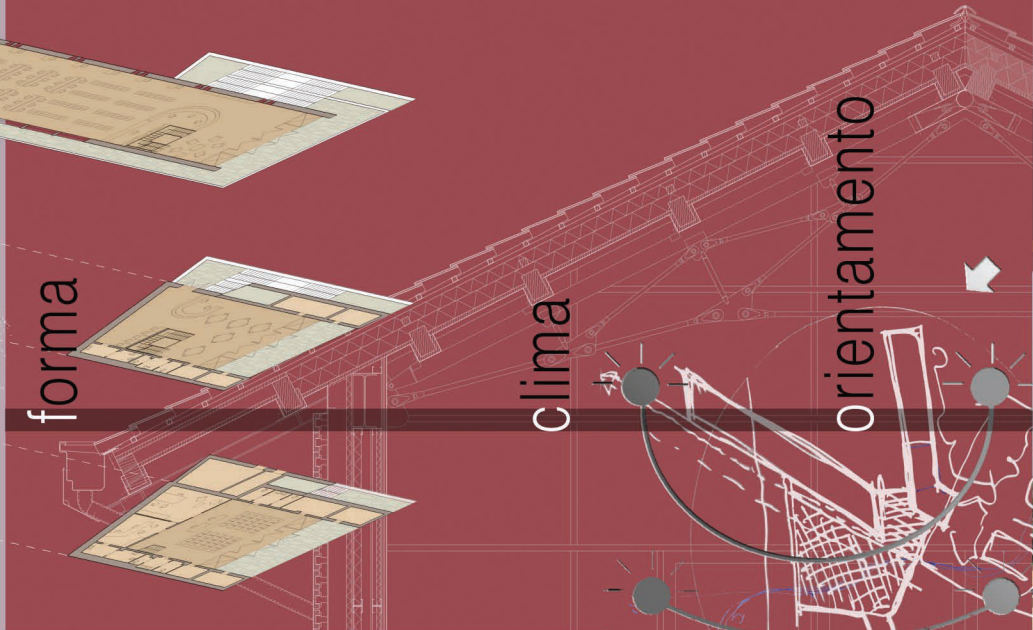
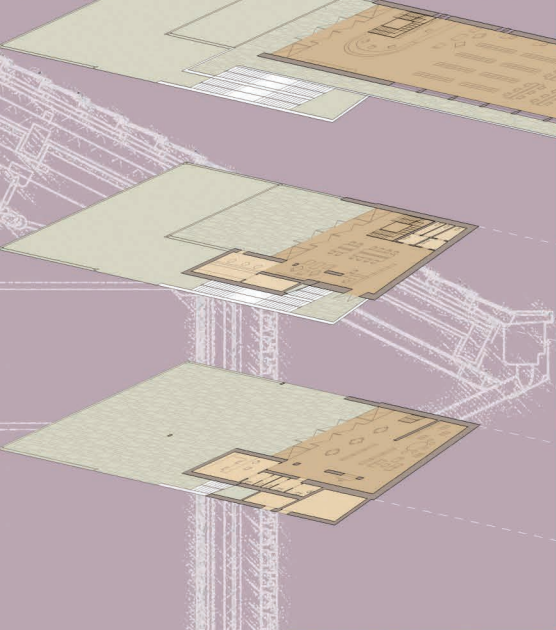


PORTA MULINA PROGETTO TECNOLOGIA



- 01 150 mm concrete beam in double row of rebar in height of 400 mm
- 02 150 mm concrete slab in double row of rebar in height of 120 mm
- 03 150 mm concrete slab in double row of rebar in height of 120 mm
- 04 150 mm concrete slab in double row of rebar in height of 120 mm
- 05 150 mm concrete slab in double row of rebar in height of 120 mm
- 06 150 mm concrete slab in double row of rebar in height of 120 mm
- 07 150 mm concrete slab in double row of rebar in height of 120 mm
- 08 150 mm concrete slab in double row of rebar in height of 120 mm
- 09 150 mm concrete slab in double row of rebar in height of 120 mm
- 10 150 mm concrete slab in double row of rebar in height of 120 mm
- 11 150 mm concrete slab in double row of rebar in height of 120 mm
- 12 150 mm concrete slab in double row of rebar in height of 120 mm
- 13 150 mm concrete slab in double row of rebar in height of 120 mm
- 14 150 mm concrete slab in double row of rebar in height of 120 mm
- 15 150 mm concrete slab in double row of rebar in height of 120 mm
- 16 150 mm concrete slab in double row of rebar in height of 120 mm
- 17 150 mm concrete slab in double row of rebar in height of 120 mm
- 18 150 mm concrete slab in double row of rebar in height of 120 mm
- 19 150 mm concrete slab in double row of rebar in height of 120 mm
- 20 150 mm concrete slab in double row of rebar in height of 120 mm

sollecitazioni climatiche



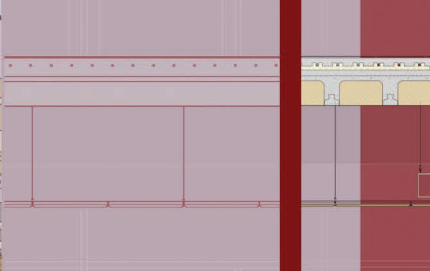
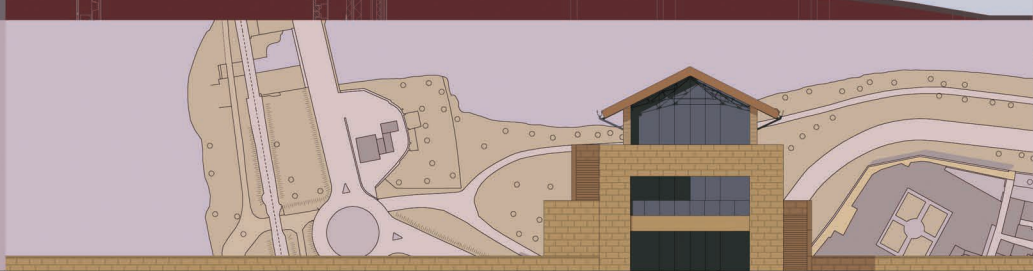
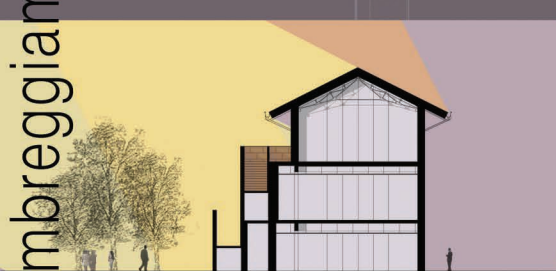
comfort



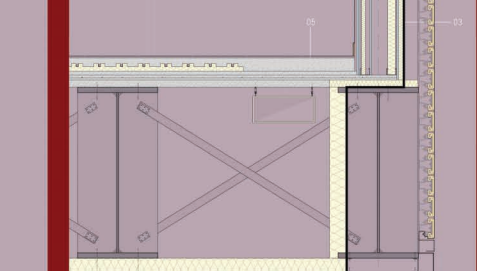
sollecitazioni climatiche



comfort



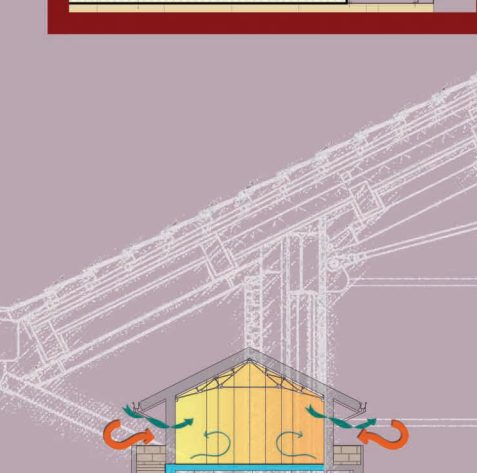
sollecitazioni climatiche



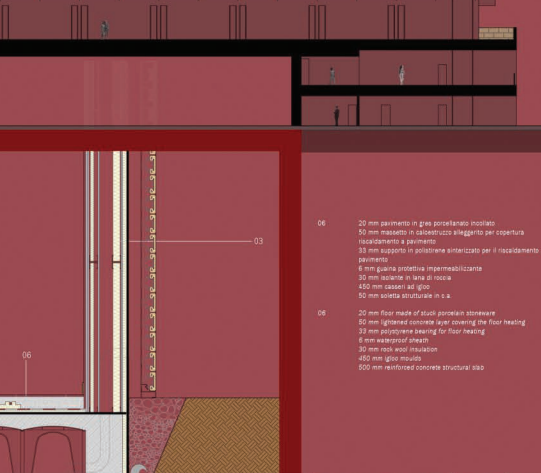
comfort



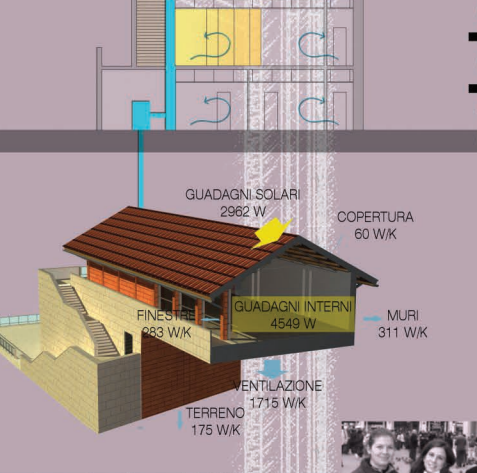
sollecitazioni climatiche



comfort



sollecitazioni climatiche



estate



sollecitazioni climatiche



estate

COSTRUIRE IL RISPARMIO ENERGETICO

The aim of this research was to point towards an emergent objective, in terms of a definition of an efficient action, from the energetic and constructive points of view, which in turn is accessible and implementable without losing sight of questions pertaining to the comprehension of the project.

Il lavoro di questo corso obiettivo la definizione di un intervento efficiente dal punto di vista energetico, possibile dal punto di vista costruttivo, accessibile dal punto di vista abitativo, senza perdere di vista le questioni legate alla progettazione architettonica.

The aim of this research was to point towards an emergent objective, in terms of a definition of an efficient action, from the energetic and constructive points of view, which in turn is accessible and implementable without losing sight of questions pertaining to the comprehension of the project.

The aim of this research was to point towards an emergent objective, in terms of a definition of an efficient action, from the energetic and constructive points of view, which in turn is accessible and implementable without losing sight of questions pertaining to the comprehension of the project.

The aim of this research was to point towards an emergent objective, in terms of a definition of an efficient action, from the energetic and constructive points of view, which in turn is accessible and implementable without losing sight of questions pertaining to the comprehension of the project.

The aim of this research was to point towards an emergent objective, in terms of a definition of an efficient action, from the energetic and constructive points of view, which in turn is accessible and implementable without losing sight of questions pertaining to the comprehension of the project.

The aim of this research was to point towards an emergent objective, in terms of a definition of an efficient action, from the energetic and constructive points of view, which in turn is accessible and implementable without losing sight of questions pertaining to the comprehension of the project.

The aim of this research was to point towards an emergent objective, in terms of a definition of an efficient action, from the energetic and constructive points of view, which in turn is accessible and implementable without losing sight of questions pertaining to the comprehension of the project.

The aim of this research was to point towards an emergent objective, in terms of a definition of an efficient action, from the energetic and constructive points of view, which in turn is accessible and implementable without losing sight of questions pertaining to the comprehension of the project.

The aim of this research was to point towards an emergent objective, in terms of a definition of an efficient action, from the energetic and constructive points of view, which in turn is accessible and implementable without losing sight of questions pertaining to the comprehension of the project.