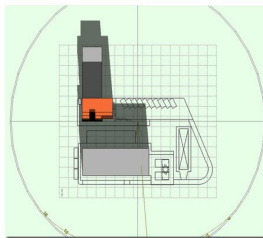
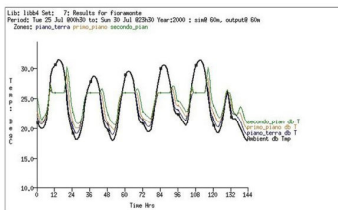


STUDIO DELLE OMBRE PORTATE

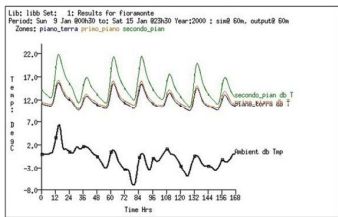


Solstizio d'inverno (ore 12.00)

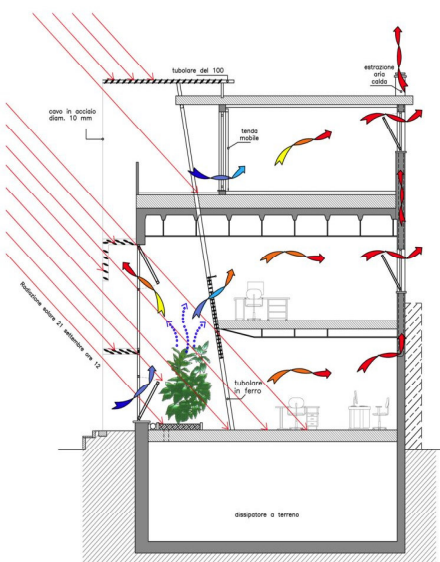
VENTILAZIONE NATURALE



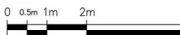
Andamento temperature interne: estate notte



Andamento temperature interne: freefloat inverno



PROSPETTO SUD



SIMULAZIONI STAGIONALI: ventilazione e illuminazione

